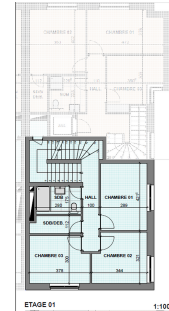
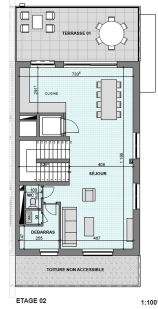




image non contractuelle



DESCRIPTION

NEW PROJECT IN KEISPELT !We are proud to present the ALL-new VILLA VERDE residential project in Keispelt.The VILLA VERDE project will offer its residents a quiet environment, with easy access to the conurbations of Mersch, Mamer and Luxembourg-City.Lot B.02 :New 3 or 4-bedroom duplex penthouse 135.52 m² on 1st and 2nd floors with 27.06m² terrace.Energy class A/A/A or A/B/A, floor heating and triple glazing for unrivalled comfort.The VILLA VERDE residential project consists of two adjoining four-storey buildings.The apartment has a large, south-west-facing terrace overlooking the fields and forest of Groussbësch in Kehlen.Composition:2nd floor:- 1 living room with open kitchen 61.08m²- 1 separate WC- 1 storeroom- 1 terrace 27.06 m²- 1 optional indoor parking space1st floor :- 1 bedroom 12.17m²- 1 bedroom 10,31m²- 1 bedroom 10,71m²- 1 bathroom 4,90m²- 1 bathroom / storeroom 3,42m²The 1st floor accommodate a 4th bedroom!Basement: 1 cellar 8.31m²The project will be built to a ve...

CHARACTERISTICS

Number of pieces : 7
Nb. chamber (s) : 4
Area : 143.03m²
Nb. of bathrooms : 1
Equipped kitchen : Non

ENERGY PASS

Energy class



CO2 emissions Class



✓ Real immo

📍 4 rue Michel Rodange L-2430
☎ +352 691 50 20 20
✉ info@real-immo.lu
🌐 <https://www.real-immo.lu/en/detail-357>